



CONSERVATOIRE

55 à 107, rue du Conservatoire

Propriétaire

Habitations de l'Outaouais métropolitain

Architecte

Marcel Landry

Constructeur

Devcore

Adresses

55, 59, 63, 67, 71, 75, 79, 83, 87, 91, 95, 99, 103, 107

Rue du Conservatoire (J9J 1L9)

Gatineau

Année de construction: 2013

Structure: Bois

Catégorie: Familles

Nombre d'étages: 3

Nombre de logements: 47

Typologie:

6 x 1cc 20 x 2cc 16 x 3cc
4 x 1cc H 1 x 2cc H

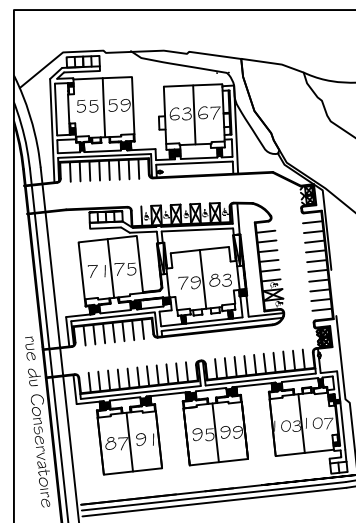
Salle communautaire: Non

Ascenseur: Non

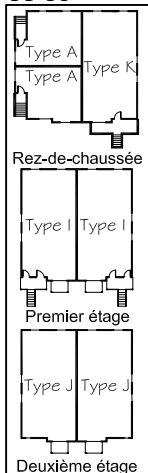


Plan d'implantation

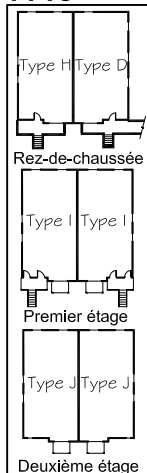
Caractéristiques générales	
Surface du terrain:	7522,6 m ²
Aires gazonnées:	± 3020 m ²
Aires de stationnements:	± 2120 m ²
Stationnement:	Extérieur
Rangement:	Int. ou ext.
Salle de lavage:	Dans le logis



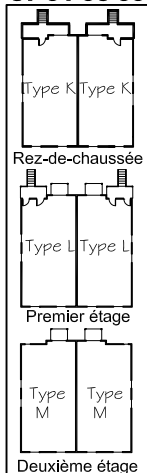
55-59



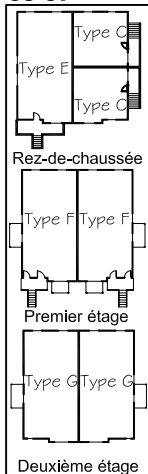
71-75



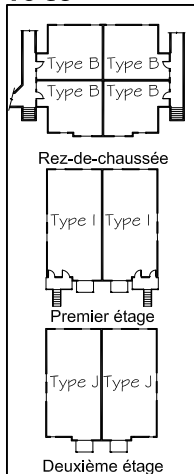
87-91-95-99



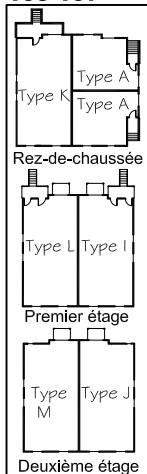
63-67



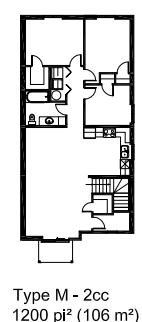
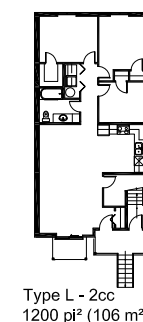
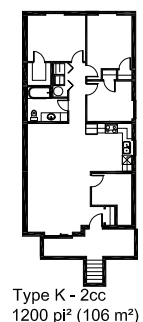
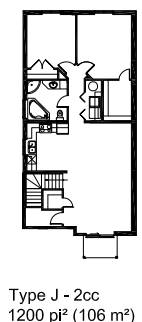
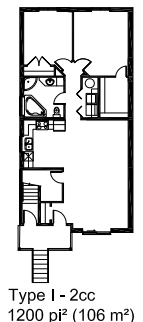
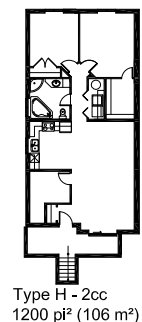
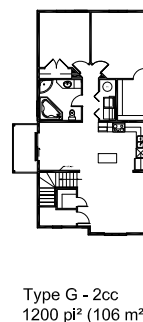
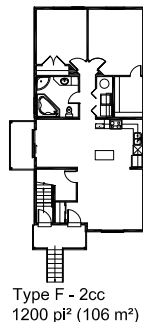
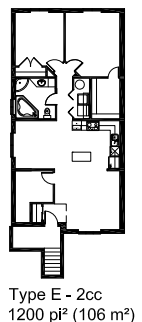
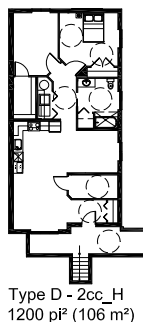
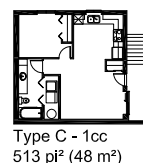
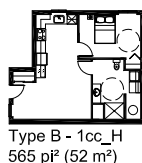
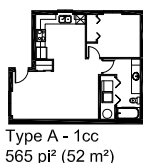
79-83



103-107



Logements types



Projet Le Conservatoire



Immeuble (logement 2 chambres, 1200 pi²)



Salle de bain



Cuisine

Chambre des maîtres

Salon, salle à diner

