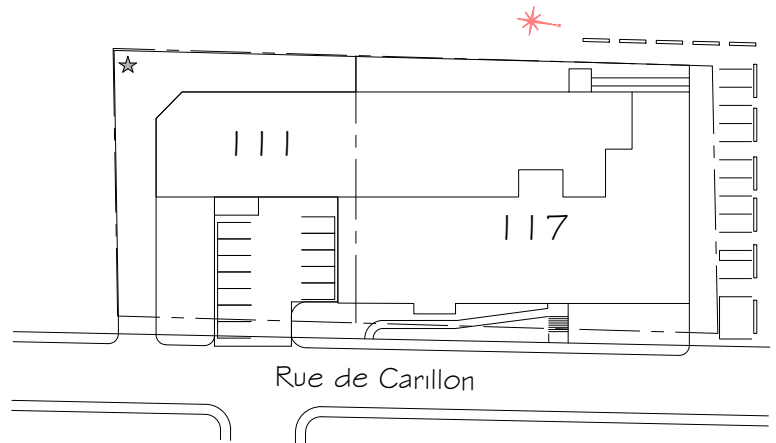


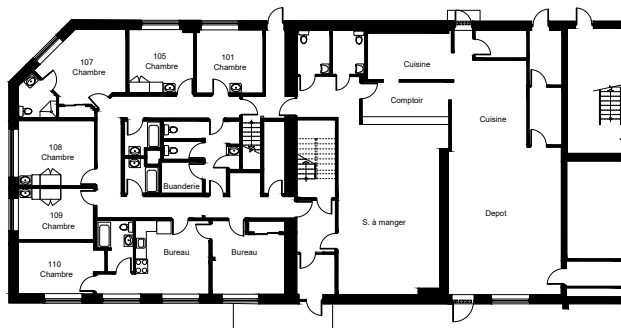


<b>Propriétaire :</b>	Habitations de l'Outaouais métropolitain
<b>Architecte :</b>	FCSD architecture + design
<b>Adresses :</b>	111, rue Carillon Gatineau QC J8X 2P8
<b>Année de construction :</b>	1952
<b>Structure :</b>	Bois
<b>Catégorie :</b>	Personne seul
<b>Toiture:</b>	Membrane
<b>Nombre d'étages :</b>	3
<b>Nombre de logements :</b>	22
<b>Typologie :</b>	21 x 1cc 1 x Studio
<b>Salle communautaire :</b>	Oui
<b>Ascenseurs :</b>	Non
<b>Stationnement :</b>	Extérieur
<b>Rangement :</b>	Dans le logis
<b>Salles de lavage :</b>	Communes

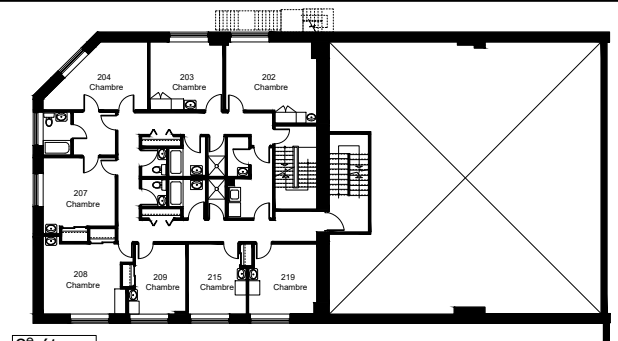


Plan d'implantation

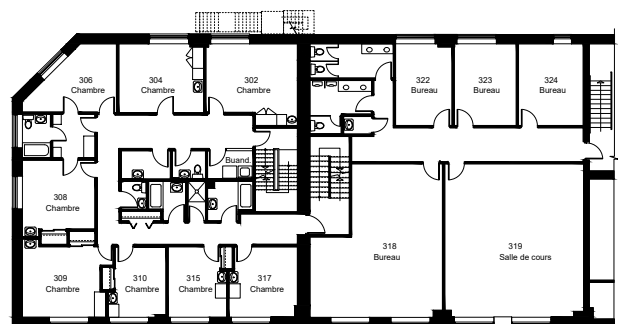
## Plans des étages



Rez-de-chaussée



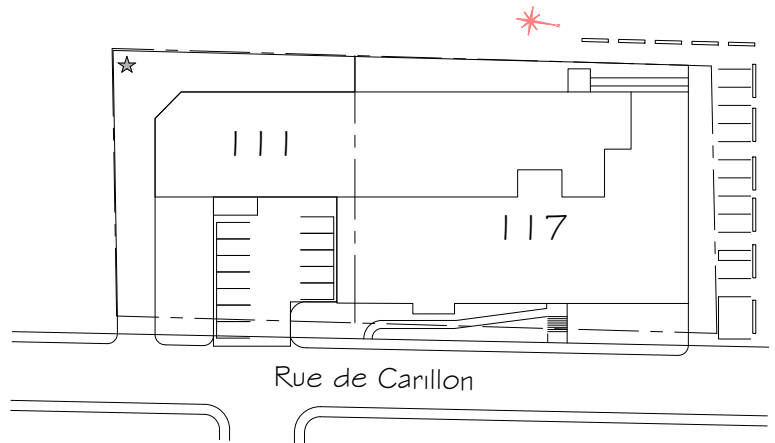
2<sup>e</sup> étage



3<sup>e</sup> étage

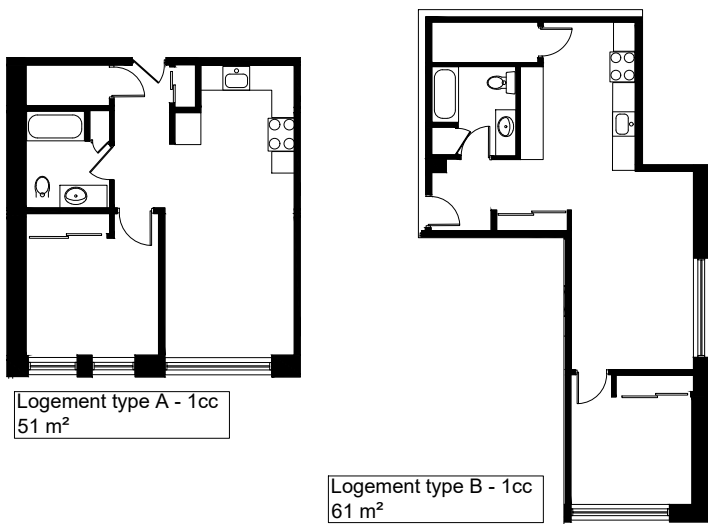


<b>Propriétaire :</b>	Habitations de l'Outaouais métropolitain
<b>Architecte :</b>	FCSD architecture + design
<b>Adresses :</b>	117, rue Carillon Gatineau QC J8X 2P8
<b>Année de construction :</b>	1952
<b>Structure :</b>	Bois
<b>Catégorie :</b>	Personne seul
<b>Toiture:</b>	Membrane
<b>Nombre d'étages :</b>	3
<b>Nombre de logements :</b>	26
<b>Typologie :</b>	24 x 1cc 2 x 2cc
<b>Salle communautaire :</b>	Oui
<b>Ascenseurs :</b>	Non
<b>Stationnement :</b>	Extérieur
<b>Rangement :</b>	Dans le logis
<b>Salles de lavage :</b>	Communes



Plan d'implantation

## Logements types

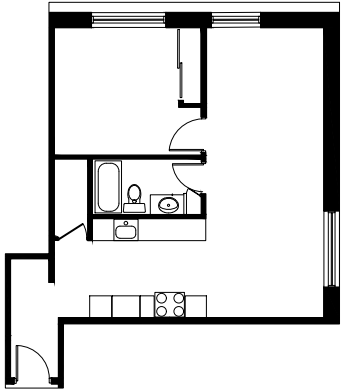


## Plans des étages

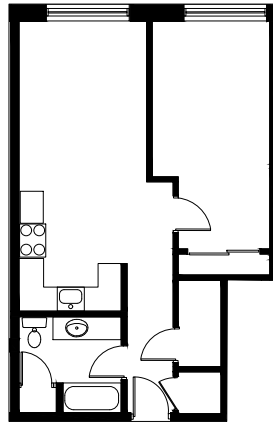




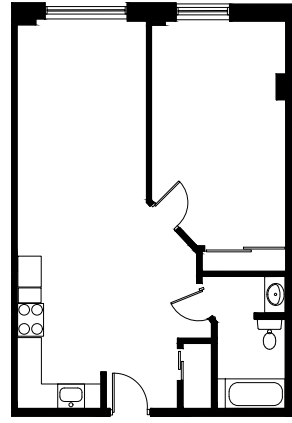
## Logements types



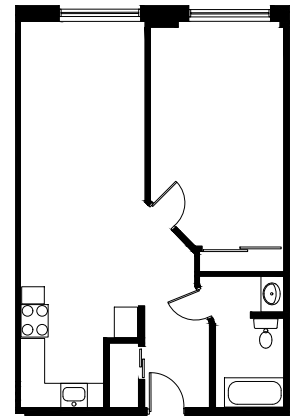
Logement type C - 1cc  
65 m<sup>2</sup>



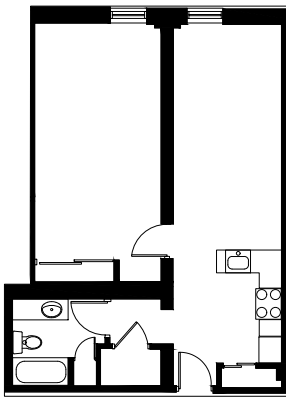
Logement type D - 1cc  
57 m<sup>2</sup>



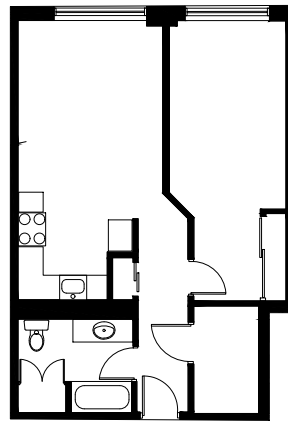
Logement type E - 1cc  
66 m<sup>2</sup> (Accessible)



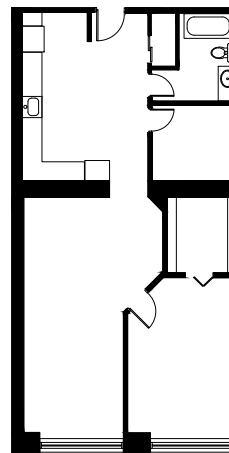
Logement type F - 1cc  
67 m<sup>2</sup>



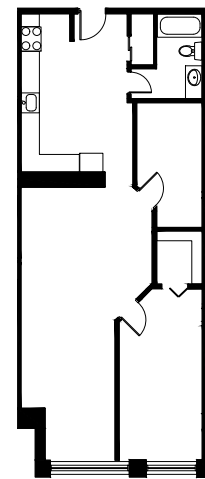
Logement type G - 1cc  
67 m<sup>2</sup>



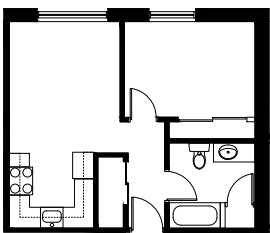
Logement type H - 1cc  
64 m<sup>2</sup>



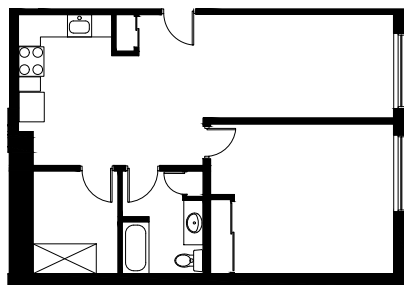
Logement type I - 1cc  
92 m<sup>2</sup>



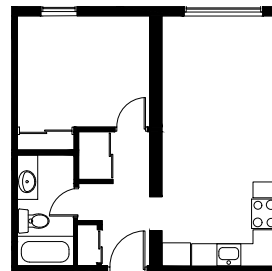
Logement type J - 1cc  
91 m<sup>2</sup>



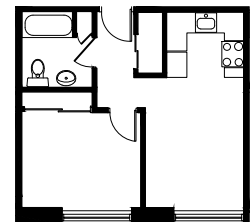
Logement type K - 1cc  
45 m<sup>2</sup>



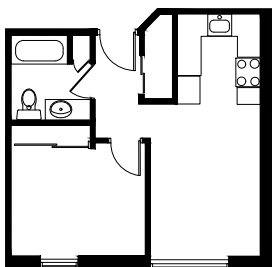
Logement type L - 1cc  
73 m<sup>2</sup>



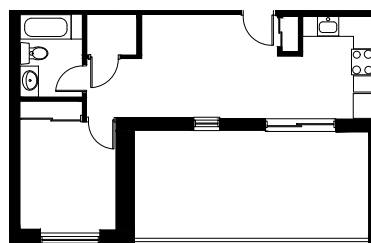
Logement type M - 1cc  
46 m<sup>2</sup>



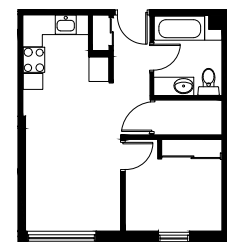
Logement type N - 1cc  
39 m<sup>2</sup>



Logement type O - 1cc  
41 m<sup>2</sup>



Logement type P - 1cc  
43 m<sup>2</sup>



Logement type Q - 1cc  
39 m<sup>2</sup>