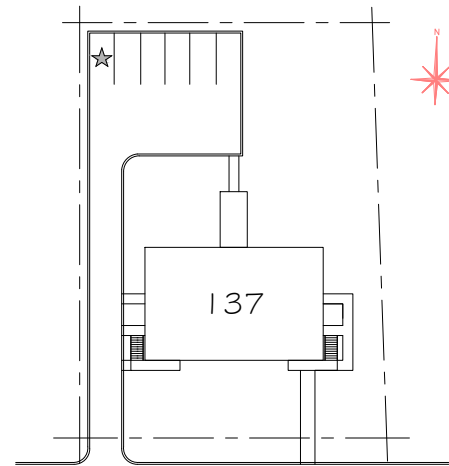




# HABITATIONS NOUVEAU DÉPART

1/2

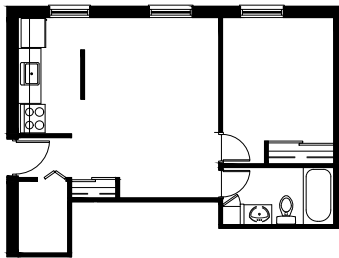
|                                |   |
|--------------------------------|---|
| <b>Propriétaire :</b>          | Habitations de l'Outaouais métropolitain        |
| <b>Architecte :</b>            | Audet, Fortin                                   |
| <b>Adresses :</b>              | 137, chemin de la Savane<br>Gatineau QC J8T 1P8 |
| <b>Année de construction :</b> | 1986  |
| <b>Structure :</b>             | Bois  |
| <b>Catégorie :</b>             | Familles  |
| <b>Toiture:</b>                | Bardeaux d'asphalte                             |
| <b>Nombre d'étages :</b>       | 3   |
| <b>Nombre de logements :</b>   | 10  |
| <b>Typologie :</b>             | 2 x studios<br>6 x 1cc<br>2 x 3cc               |
| <b>Salle communautaire :</b>   | Non   |
| <b>Ascenseurs :</b>            | Non   |
| <b>Stationnement :</b>         | Extérieur                                       |
| <b>Rangement :</b>             | Dans le logis                                   |
| <b>Salles de lavage :</b>      | Dans le logis                                   |



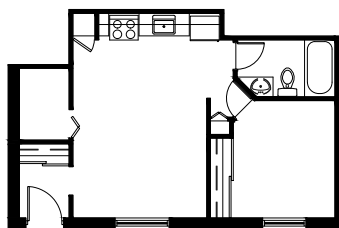
Ch. de la Savane

## Plan d'implantation

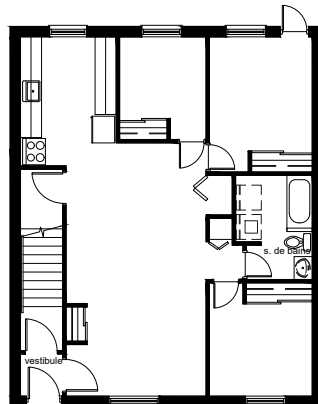
### Logements types



Logement type A - 1cc  
45 m<sup>2</sup>

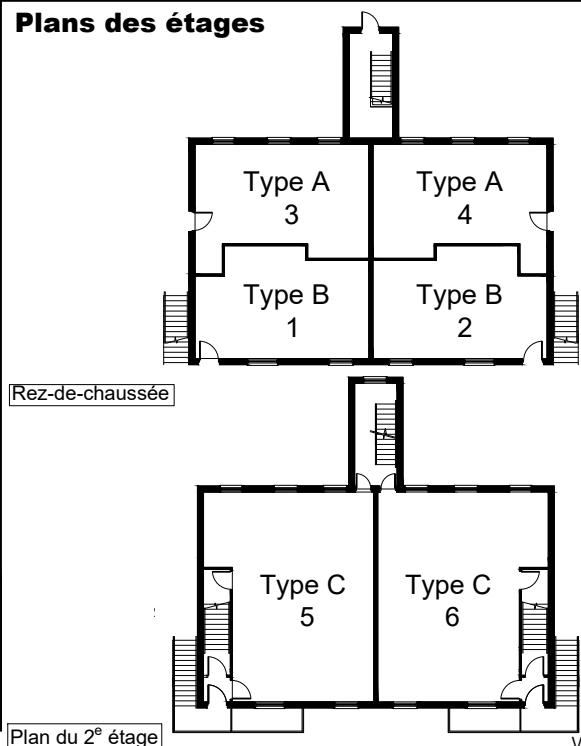


Logement type B - 1cc  
42 m<sup>2</sup>



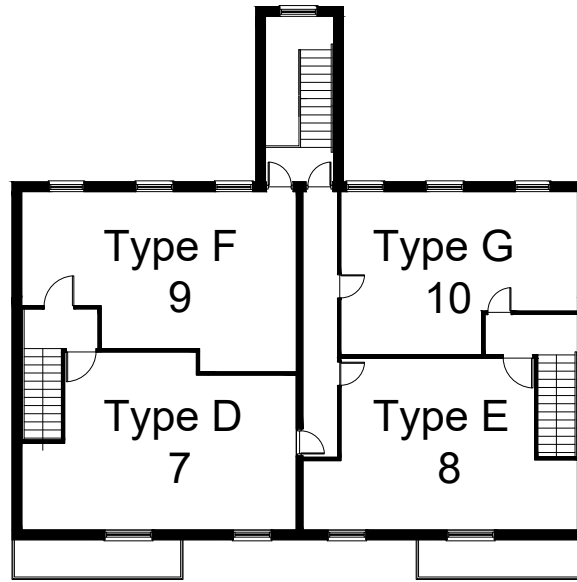
Logement type C - 2cc  
79 m<sup>2</sup>

### Plans des étages

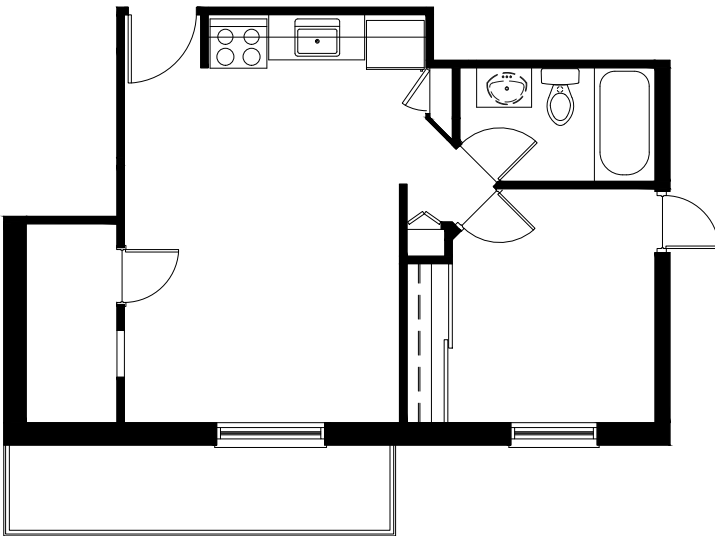




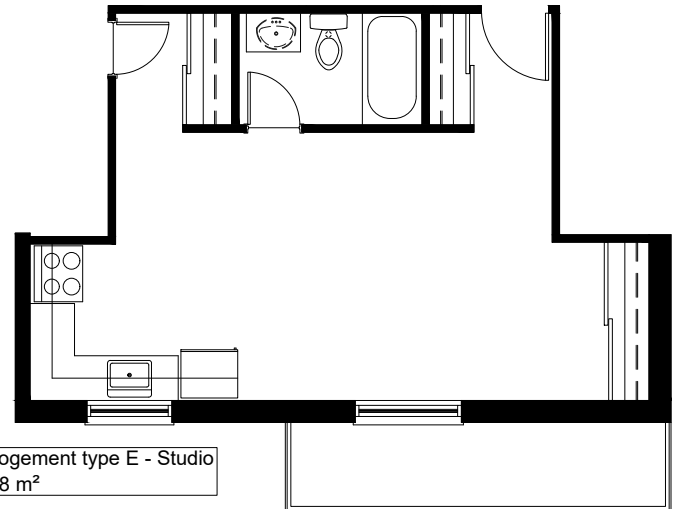
## Plans du 3<sup>e</sup> étage



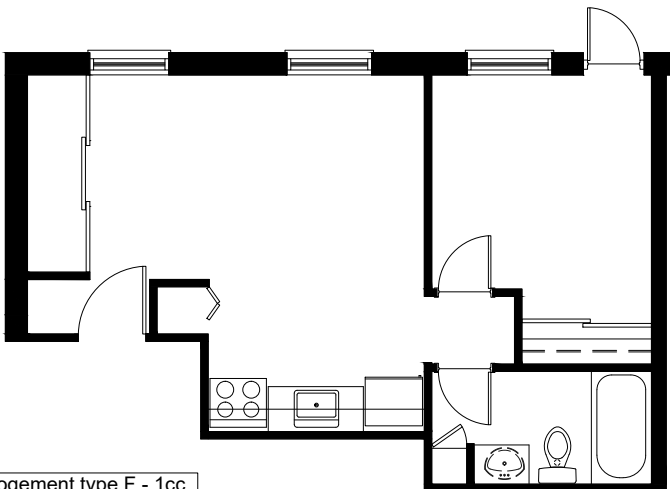
## Logements types



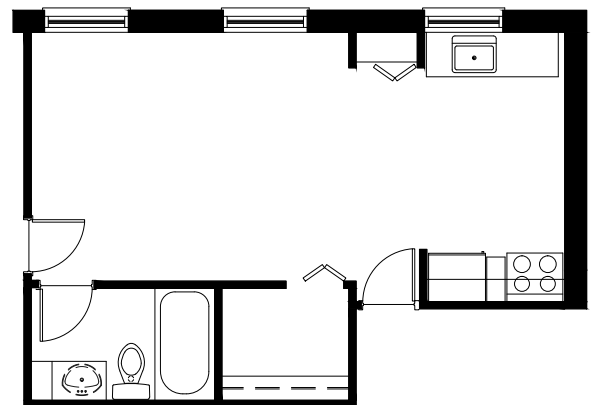
Logement type D - 1cc  
41 m<sup>2</sup>



Logement type E - Studio  
38 m<sup>2</sup>



Logement type F - 1cc  
69 m<sup>2</sup>



Logement type G - Studio  
54 m<sup>2</sup>