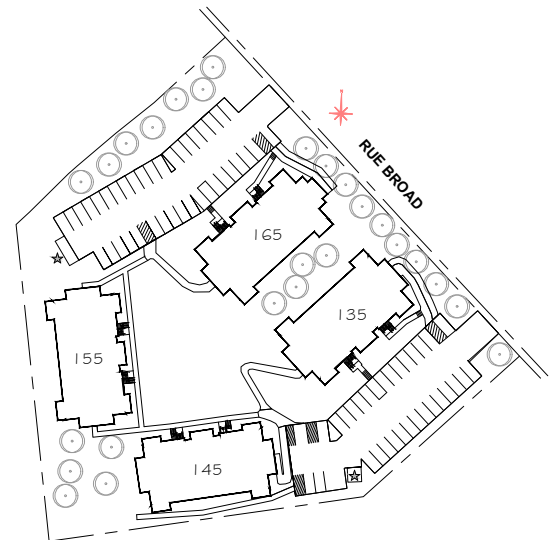




# HABITATIONS BROAD

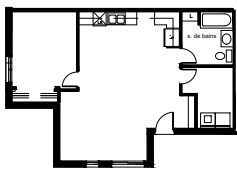
1/2

<b>Propriétaire :</b>	Habitations de l'Outaouais métropolitain
<b>Architecte :</b>	Pierre Cayer & Associés
<b>Adresses :</b>	135, 145, 155 et 165, rue Broad Gatineau QC J9H 7M3
<b>Année de construction :</b>	2010
<b>Structure :</b>	Bois
<b>Catégorie :</b>	Familles
<b>Toiture:</b>	Bardeaux d'asphalte
<b>Nombre d'étages :</b>	3
<b>Nombre de logements :</b>	55
<b>Typologie :</b>	11 x 1cc 3 x 1cc accessibles 32 x 2cc 8 x 3cc 1 x 3cc accessibles
<b>Salle communautaire :</b>	Non
<b>Ascenseurs :</b>	Non
<b>Stationnement :</b>	Extérieur
<b>Rangement :</b>	Dans le logis
<b>Salles de lavage :</b>	Dans le logis

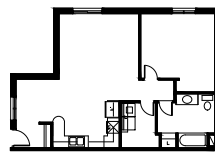


Plan d'implantation

## Logements types

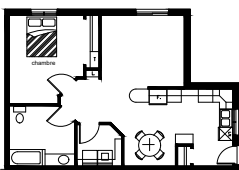


Logement type A - 1cc  
59.6 m<sup>2</sup>

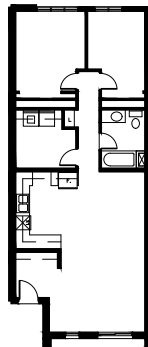


Logement type B1 - 1cc  
64.25 m<sup>2</sup>

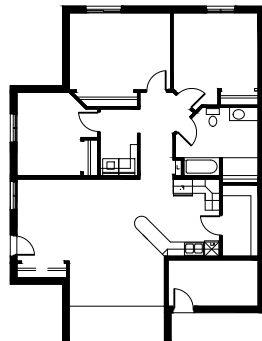
105 (135, Broad), 102 et 106 (165 Broad)



Logement type B2 - 1cc accessible  
64.25 m<sup>2</sup>

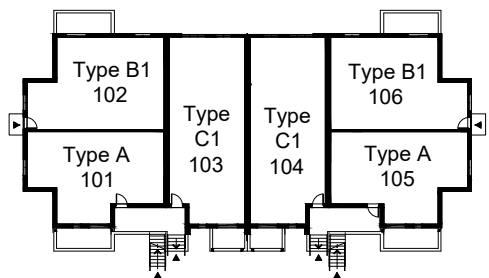


Logement type C1 - 2cc  
77.46 m<sup>2</sup>

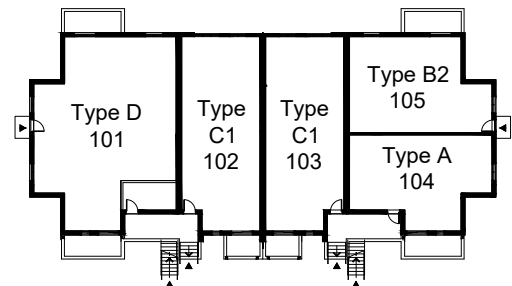


Logement type D - 3cc accessible  
116.88 m<sup>2</sup>

## Plans du rez de chaussée



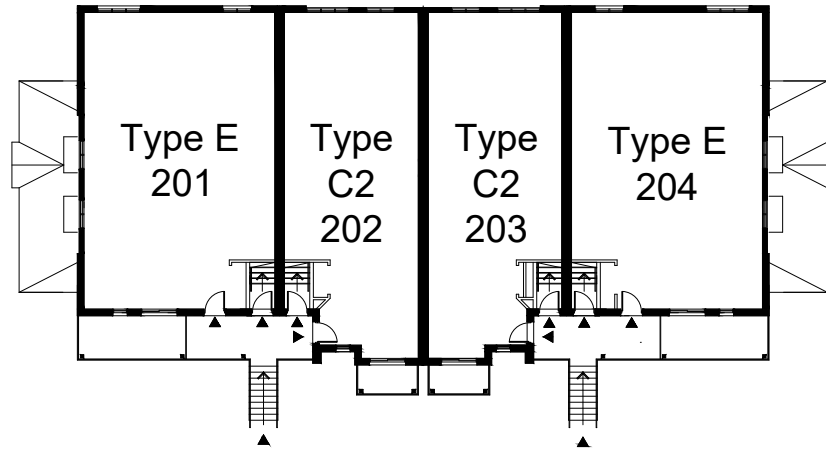
Rez-de-chaussée (145, 155 et 165 Broad)



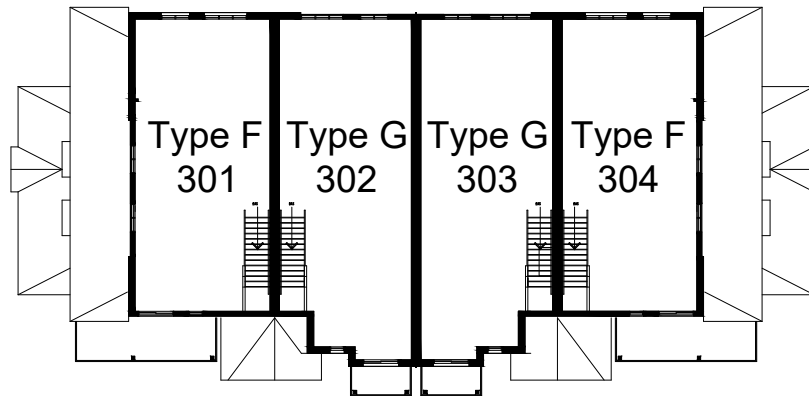
Rez-de-chaussée (135 Broad)



## Plans des étages

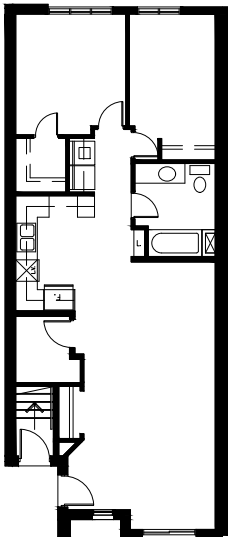


Plan du 2<sup>e</sup> étage

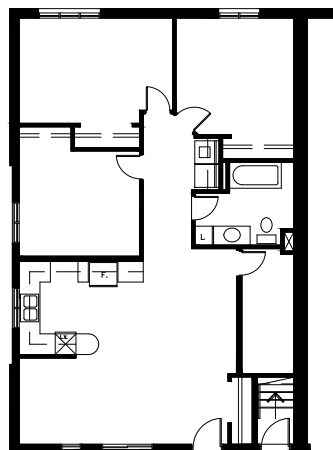


Plan du 3<sup>e</sup> étage

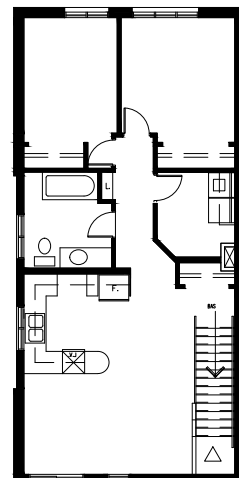
## Logements-types



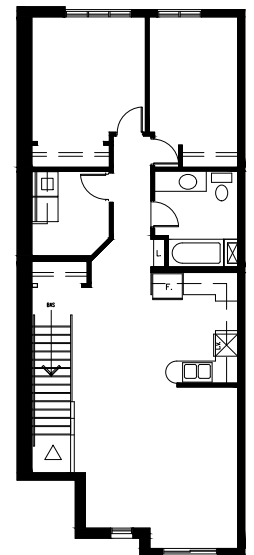
Logement type C2 - 2cc  
77.46 m<sup>2</sup>



Logement type E - 3cc  
116.88 m<sup>2</sup>



Logement type F - 2cc  
72.66 m<sup>2</sup>



Logement type G - 2cc  
79.24 m<sup>2</sup>